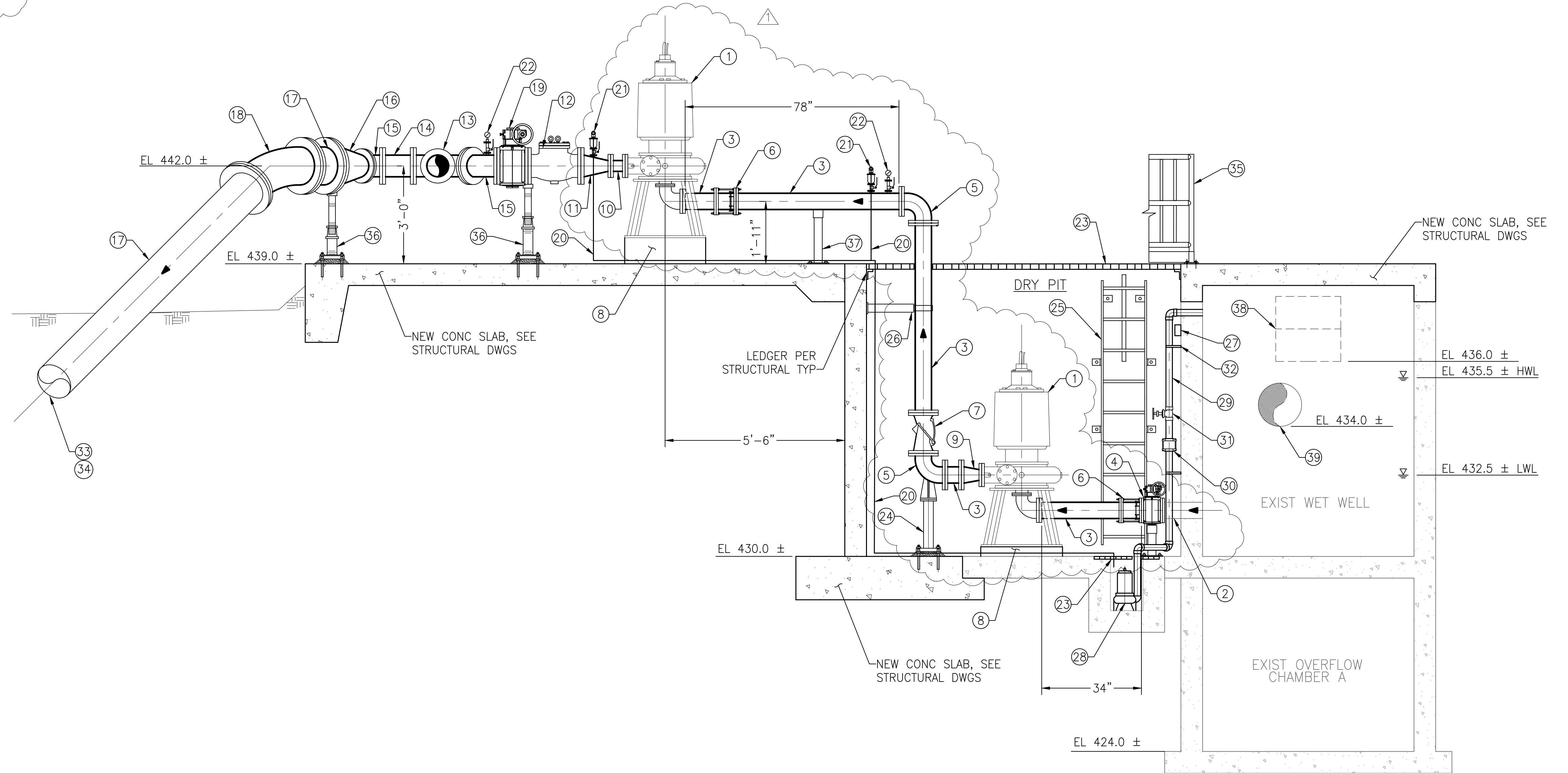


MATERIAL LIST

- 1 DRY PIT SUBMERSIBLE PUMP, SEE SPECIFICATIONS
- 2 CUT EXISTING 6" DIA STEEL PIPE RETAINING A STUB LENGTH OF 6" FROM THE BACK WALL OF THE DRY PIT. WELD NEW STEEL FLANGE TO STUB.
- 3 6" DI FLGD SPOOL
- 4 6" PLUG VALVE
- 5 6" DI FLGD 90° BEND
- 6 6" DISMANTLING JOINT
- 7 6" FLGD FLAPPER-STYLE CHECK VALVE
- 8 PUMP PEDESTAL BY MFR, PUMP HOUSEKEEPING PAD PER STRUCTURAL DWGS, TYP
- 9 6" x 4" DI FLGD RED
- 10 4" DI FLGD SPOOL
- 11 8" x 4" DI FLGD RED
- 12 8" FLGD FLAPPER-STYLE CHECK VALVE
- 13 8" DI FLGD TEE
- 14 8" DI FLGD SPOOL
- 15 8" DI FLGD 45° BEND
- 16 14" x 8" DI FLGD RED
- 17 14" DI FLGD SPOOL
- 18 14" DI FLGD 45° BEND
- 19 8" PLUG VALVE
- 20 DRAIN PIPE FROM AIR RELEASE VALVE
- 21 AIR RELEASE VALVE
- 22 PRESSURE GAUGE
- 23 GRATING, SEE STRUCTURAL DWGS
- 24 ELBOW PIPE SUPPORT
- 25 LADDER
- 26 PIPE SUPPORT BRACKET
- 27 NEW LIGHT, SEE ELECTRICAL DWGS
- 28 SUMP PUMP, SEE SPECIFICATIONS
- 29 2" PVC DISCHARGE PIPE
- 30 2" WAFER CHECK VALVE
- 31 2" GATE VALVE
- 32 U-CLAMP PIPE SUPPORT
- 33 INSTALL RESTRAINED MJ COUPLING TO PLAIN END DI DISCHARGE PIPE PER SPECS
- 34 INSTALL RESTRAINED COUPLING(S) AS REQUIRED TO CONNECT TO EXIST 14" PVC C900 FORCE MAIN. COUPLINGS PER SPECIFICATIONS.
- 35 NEW GUARD RAIL FOR LAYOUT SEE DWG M-1
- 36 ADJUSTABLE PIPE/FLANGE SUPPORT
- 37 STANCHION PIPE SUPPORT
- 38 EXISTING OVERFLOW PORT
- 39 EXISTING 16" INLET SEWER



SECTION 1
SCALE: 1/2" = 1'-0"

F:\Projects\FPUD (0112)\0003 Overland Trail LS Rehab\CADD\M-2.dwg 04/09/2020 12:33

NO.	DESCRIPTION	DATE	APPROVED	SCALE AS SHOWN
1	RFI No. 11	4/8/20		DATE 9/12/2019
				PROJECT NO. 112.FPUD.0003
				DESIGNED BY JMC
				DRAWN BY AS/TS
				CHECKED BY RHK

Infrastructure
ENGINEERING CORPORATION

14271 Danielson Street
Poway, California 92064
T 858.413.2400 F 858.413.2440
www.iecorporation.com

REGISTERED PROFESSIONAL ENGINEER
MARIE COOPER
No. C 82185
Exp. 3-31-20
CIVIL
STATE OF CALIFORNIA
09/12/2019
DATE

FPUD
Fallbrook Public Utility District

990 E. MISSION RD
FALLBROOK, CA 92028

APPROVED BY: JACK R. BEBEE, P.E.
GENERAL MANAGER

DATE

OVERLAND TRAIL LIFT STATION
REHABILITATION PROJECT
MECHANICAL SECTION 1 -
LIFT STATION MODIFICATIONS

DRAWING NO. M-2
SHEET NO. 12 OF 66
CLIENT JOB NO. 3057